

FROM SEED TO YIELD.

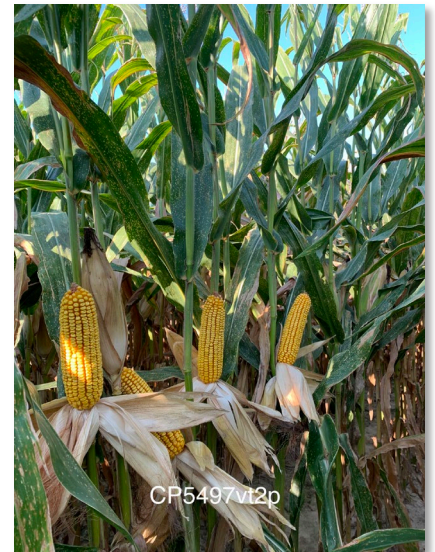
OBSERVATIONS FROM THE WEEK OF: NOVEMBER 1, 2021

NEW

CP5497VT2P

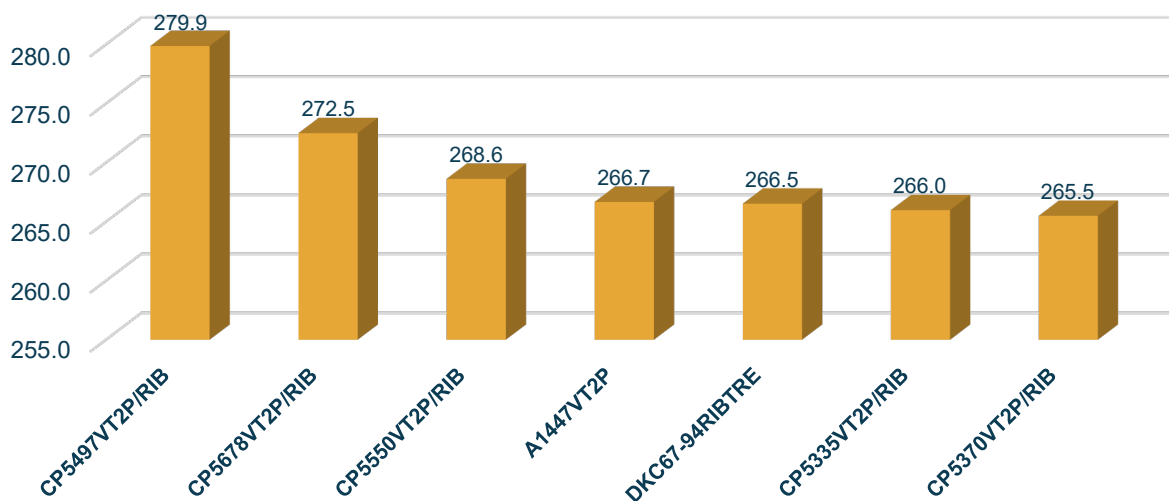
VT DoublePRO

- 114-day RM hybrid
- Med-tall plant, med-high ear
- Yield leader across six Answer Plot® trials in the Delta
- Very good test weight with nice ear flex
- Response To Scores -
RTP – High, RTF – High, RTN – Low
- Timely harvest recommended
- Limited supply for 2022



[Learn more about CP5497VT2P](#)

2021 Answer Plot® Trial - CPT115 Summary



Portageville, MO, Des Arc & Dumas, AR, Marks & Rolling Fork, MS, Winnsboro, LA

All photos are either the property of WinField United or used with permission.

© 2021 WinField United. Important: Always read and follow label instructions. Crop performance descriptions are based on internal trials conducted by WinField United and/or sourced from the genetic supplier and may change as additional data is gathered. Crop performance depends on many factors beyond the control of WinField United, including without limitation, rainfall, temperature, soil type, crop production patterns or unforeseen disease pressure. Answer Plot, CROPLAN, WinField, and WinPak are trademarks of WinField United. The Roundup Ready 2 Xtend® traits may be protected under numerous United States patents. It is unlawful to keep CROPLAN®, Roundup Ready 2 Yield® or Roundup Ready 2 Xtend® soybeans for planting or transfer to others for use as a planting seed. Asgrow®, Channel®, Droughtgard®, Roundup Ready 2 Xtend®, VT Double Pro®, RIB Complete® and Smartstax® are trademarks used under license from Bayer Group. Pioneer is a registered trademark of DuPont. All other trademarks are the property of their respective owners.