

# FROM SEED TO YIELD.



Insights from the week of: October 19, 2020

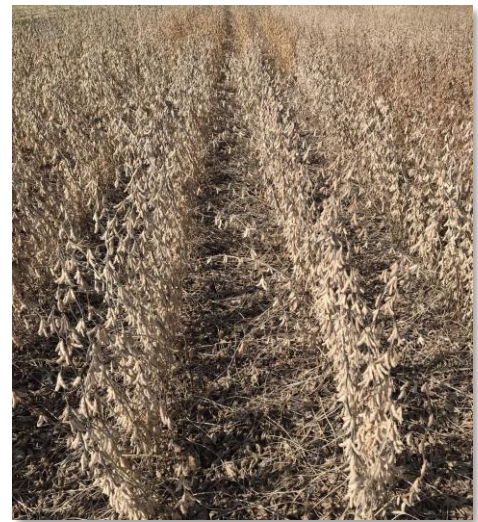


## New XtendFlex® Soybeans are here.

### CP2541XFS



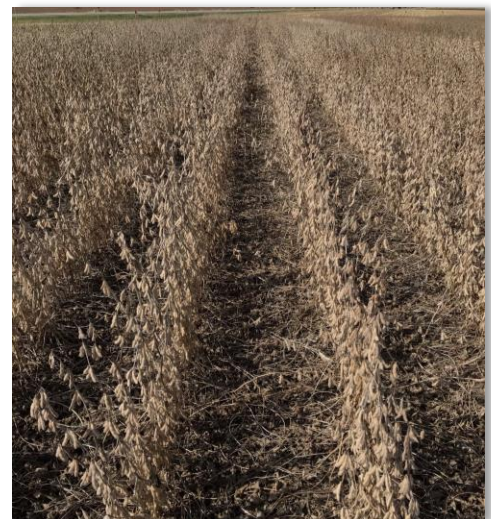
- Exciting high yield potential variety
- Broad acre adaptability, moves across soil types and yield environments
- Medium-Tall plant with strong standability
- Manage PRR field tolerance with seed treatments



### AG28XF1



- Late group II option with the ability to yield
- Above average SDS tolerance
- Average standability
  - Maximized by population management
  - Caution placement on productive acres



All photos are either the property of WinField United or used with permission.

© 2020 WinField United. **Important: Always read and follow label instructions.** Crop performance descriptions are based on internal trials conducted by WinField United and/or sourced from the genetic supplier and may change as additional data is gathered. Crop performance depends on many factors beyond the control of WinField United, including without limitation, rainfall, temperature, soil type, crop production patterns or unforeseen disease pressure. Answer Plot, CROPLAN, WinField, and WinPak are trademarks of WinField United. The Roundup Ready 2 Xtend® traits may be protected under numerous United States patents. It is unlawful to keep CROPLAN®, Roundup Ready 2 Yield® or Roundup Ready 2 Xtend® soybeans for planting or transfer to others for use as a planting seed. Asgrow®, Channel®, Droughtgard®, Roundup Ready 2 Xtend®, XtendFlex®, VT Double Pro®, RIB Complete® and Smartstax® are trademarks used under license from Bayer Group. All other trademarks are the property of their respective owners.

# FROM SEED TO YIELD.



Insights from the week of: October 19, 2020



## New XtendFlex® Soybeans are here.

### CP3640XF



- High yield potential WinPak® variety consisting of CP3541XF and CP3641XF
- Transition from CP3450X to CP3640XF
- Intermediate/bushy canopy with strong standability
- BSR and SSC resistant; manage PRR with seed treatment
- Broad acre footprint; moves over soil types well



### AG38XF1



- Broadly adapted variety with increased yield potential on productive ground
- Strong yield potential
- Excellent agronomics and disease ratings
- Medium tall and bush with strong ability to stand

All photos are either the property of WinField United or used with permission.

© 2020 WinField United. **Important: Always read and follow label instructions.** Crop performance descriptions are based on internal trials conducted by WinField United and/or sourced from the genetic supplier and may change as additional data is gathered. Crop performance depends on many factors beyond the control of WinField United, including without limitation, rainfall, temperature, soil type, crop production patterns or unforeseen disease pressure. Answer Plot, CROPLAN, WinField, and WinPak are trademarks of WinField United. The Roundup Ready 2 Xtend® traits may be protected under numerous United States patents. It is unlawful to keep CROPLAN®, Roundup Ready 2 Yield® or Roundup Ready 2 Xtend® soybeans for planting or transfer to others for use as a planting seed. Asgrow®, Channel®, Droughtgard®, Roundup Ready 2 Xtend®, XtendFlex®, VT Double Pro®, RIB Complete® and Smartstax® are trademarks used under license from Bayer Group. All other trademarks are the property of their respective owners.